

Wessex Scale Co

TITAN *Compact Series*

Trans-Industrial Technology Advanced Node

SK-WP
Dust & Waterproof Digital Scales



Washable!

IP65

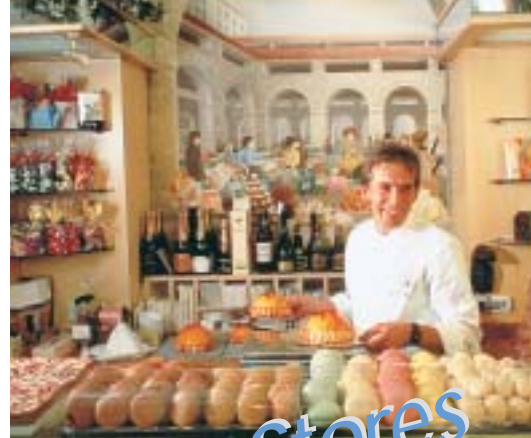


AND ...Clearly a Better Value





Food Service



Stores

**Perfect choice for any application
if washing after use is necessary!!**

TITAN Compact Series

SK-WP

Dust & Waterproof Digital Scales



Model

Capacity & Resolution

| | |
|------------------|-----------------------|
| SK-1000WP | 1000g x 0.5g |
| SK-2000WP | 2000g x 1g |
| SK-5000WP | 5000g x 2g |
| SK-5001WP | 5000g x 1g |
| SK-10KWP | 10kg x 0.005kg |
| SK-20KWP | 20kg x 0.01kg |

- Washable (Dust & Waterproof, IP-65)
- Stainless Steel Body and Weighing Pan
- 1/2000 Resolution (SK-5001WP: 1/5000)
- Large & Clear LCD Display (25mm)
- Large Square Weighing Pan
- Designed to Meet Weights & Measures Regulations
- Portable (6 D Type Batteries, Batteries not included)
- Net Weight / Stability Indication
- Low Battery Indication
- Separate Keys for Power and Re-Zero
- Auto Power Off
- AC Adaptor (option)

Specifications

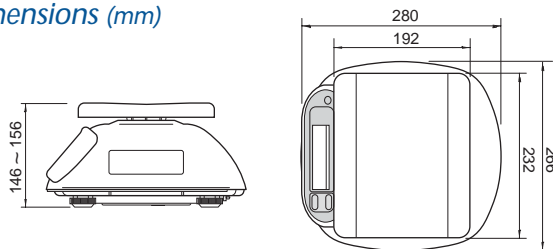
| SK-WP | SK-1000WP | SK-2000WP | SK-5000WP | SK-5001WP | SK-10KWP | SK-20KWP |
|--------------------------|---|-----------|-----------|-----------|---------------|---------------|
| Capacity/Resolution* | 1000 x 0.5g | 2000 x 1g | 5000 x 2g | 5000 x 1g | 10k x 0.005kg | 20k x 0.01kg |
| Linearity | ± 1g | ± 2g | ± 4g | ± 4g | ± 0.01kg | ± 0.02kg |
| Repeatability | ± 0.5g | ± 1g | ± 2g | ± 2g | ± 0.005kg | ± 0.01kg |
| Display | 25mm / 0.98 inch, 7segment LCD | | | | | |
| Pan Size | 232(W) x 192(D)mm / 9.13(W) x 7.56(D)inches | | | | | |
| Battery Life (Approx.) | 600 hours with manganese type 1200 hours with alkaline cells at 20°C / 68°F | | | | | |
| Operating Temp. | -10°C~40°C / 14°F~104°F, Less than 85%RH | | | | | |
| Weight (Approx.) | 2.9kg / 6.4lb | | | | | 3.2kg / 7.1lb |
| Calibration Mass(option) | 1000g | 2000g | 5000g | 5000g | 10kg | 20kg |
| Power | 6 x R20P / LR20 / "D" size batteries | | | | | |

* lb version available

Specifications subject to change for improvement without notice.

Accessories AX-TB125 AC Adaptor AC200~240V 'C' plug
 AX-TB126 AC Adaptor AC200~240V 'BF/S/no' plug
 AX-TB196 AC Adaptor AC100V
 AX-TB202 AC Adaptor AC120V

Dimensions (mm)



AND ...Clearly a Better Value

Supplied by,

Wessex Scale Co, Lower Mill, Exford Nr Minehead Somerset TA24 7QE
 Tel: 0845 472 5345 Fax: 01643 800 299
 Email: sales@wessexscales.co.uk
 Website: www.wessexscales.co.uk