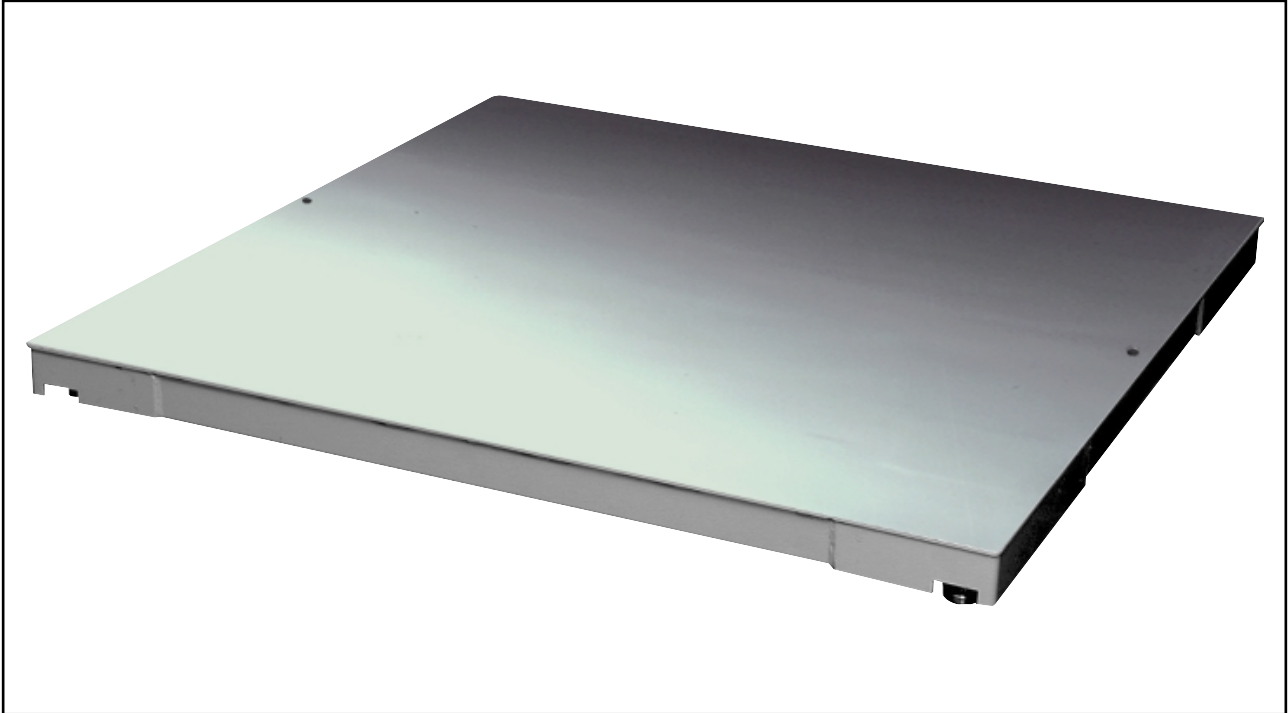


surface or pit mounted platform



Description

General

The platform is designed for surface and pit mounting.

Its minimal height makes it ideal for surface mounting.

Alternatively, with no projection above platform level, it can be recessed into a pit where site and circumstances permit.

Fabricated stainless steel robust construction.

Spirit level is fitted to the corner of the platform and is protected by the corner of the deck.

The platforms are fitted with four matched output load cells which provide sensitivity and robustness.

The load cells terminate in a water proof junction box containing a summation board to match the output of the cells.

A 5 m interconnecting cable to the indicator provides a single output. There is a selection of connector types and longer cables are available as options.

The H530 may be connected to all Avery Berkel, and a range of third party, indicators

The H530 uses OIML R60 approved load cells. Each load cell is fitted with a robust stainless steel articulated foot, which provides limited height adjustment and ensures high accuracy on uneven floors.

Specification

Capacities & Strengths

The number and weight value of digital weight increments must have regard to the local Weights and Measures regulation if stamping is required.

Maximum Strengths

Unless otherwise stated, the maximum strength signifies that the platform will carry this loading evenly distributed over the platform area.

Axle loads must not exceed 55% of platform strength applied over two footprints at 10 Bar with footprint spacing equal to half of platform minimum dimension, as detailed below.

Platform Type	Platform Size mm	Nominal Strength kg	L/C Capacity kg	Contact Area mm		Wheel Load kg	Footprint Pressure Bar
Shear Beam Load Cell	750 x 750 1000 x 1000	1000	300	50	55	275	10
	750 x 750 1000 x 1000 1250 x 1000 1250 x 1250 1500 x 1250 1500 x 1500 2000 x 1500	3000	1000	75	110	825	10
	1500 x 1500 2000 x 1500 2000 x 2000 2500 x 2000	6000	2000	125	132	1650	10
	1500 x 1500 2000 x 1500 2000 x 2000 2500 x 2000	12000	5000	175	189	3300	10

**Platform Sizes,
Capacities & Division
Size**

Maximum Strength 1000 kg

Platform Size	Maximum Height	Capacity
0.75 m x 0.75 m	0.084 m	300 kg x 0.05 kg 600 kg x 0.1 kg
1 m x 1 m	0.084 m	300 kg x 0.05 kg 600 kg x 0.1 kg

Custom sizes available in 10 mm steps between 0.75 m x 0.75 m to 1 m x 1 m at additional cost. Minimum size 0.75 m x 0.75 m.

Maximum Strength 3000 kg

Platform Size	Maximum Height	Capacity
0.75 m x 0.75 m	0.084 m	1200 kg x 0.2 kg 1500 kg x 0.5 kg
1 m x 1 m	0.084 m	1200 kg x 0.2 kg 1500 kg x 0.5 kg 3000 kg x 0.5 kg 3000 kg x 1.0 kg
1.25 m x 1 m	0.084 m	1200 kg x 0.2 kg 1500 kg x 0.5 kg 3000 kg x 0.5 kg 3000 kg x 1.0 kg
1.25 m x 1.25 m	0.084 m	1200 kg x 0.2 kg 1500 kg x 0.5 kg 3000 kg x 0.5 kg 3000 kg x 1.0 kg
1.5 m x 1.25 m	0.084 m	1200 kg x 0.2 kg 1500 kg x 0.5 kg 3000 kg x 0.5 kg 3000 kg x 1.0 kg
1.5 m x 1.5 m	0.084 m	1200 kg x 0.2 kg 1500 kg x 0.5 kg 3000 kg x 0.5 kg 3000 kg x 1.0 kg
2 m x 1.5 m	0.084 m	3000 kg x 0.5 kg 3000 kg x 1.0 kg

Custom sizes available in 10 mm steps between 0.75 m x 0.75 m to 2 m x 1.5 m at additional cost. Minimum size 0.75 m x 0.75 m.

Maximum Strength 6000 kg

Platform Size	Maximum Height	Capacity
1.5 m x 1.5 m	0.103 m	6000 kg x 1.0 kg 6000 kg x 2.0 kg*
2 m x 1.5 m	0.103 m	6000 kg x 1.0 kg 6000 kg x 2.0 kg*
2 m x 2 m	0.103 m	6000 kg x 1.0 kg 6000 kg x 2.0 kg*
2.5 m x 2 m	0.103 m	6000 kg x 1.0 kg 6000 kg x 2.0 kg*

Custom sizes available in 10 mm steps between 1.5 m x 1.5 m to 2.5 m x 2 m at additional cost. Minimum size 1.5 x 1.5 m.

Maximum Strength 12000 kg

Platform Size	Maximum Height	Capacity
1.5 m x 1.5 m	0.127 m	12000 kg x 2.0 kg 12000 kg x 5.0 kg*
2 m x 1.5 m	0.127 m	12000 kg x 2.0 kg 12000 kg x 5.0 kg*
2 m x 2 m	0.127 m	12000 kg x 2.0 kg 12000 kg x 5.0 kg*
2.5 m x 2 m	0.127 m	12000 kg x 2.0 kg 12000 kg x 5.0 kg*

Custom sizes available in 10 mm steps between 1.5 m x 1.5 m to 2.5 m x 2 m at additional cost. Minimum size 1.5 m x 1.5 m.

* EC trade approved models.

Construction

Grade 304L (BS1449 part 2; Euronorm 88) stainless steel construction throughout the platform.

Finish

Aluminium oxide grit blasted.

Lifting & Repositioning

The H530 may be lifted or moved by inserting two M16 lifting eye bolts into the M16 diagonal holes in the top plate of the platform.

Approvals

All data relating to the performance of the platform meets and exceeds the requirements of EN 45501: 1992 European approval (EC approval) Accuracy Class III.

Environment**Operating Temperature**

-10° C to 40° C.

Storage Temperature

-10° C to 60° C

Resistance to Dirt and Moisture

Hoseproof and sealed to IP67.

Options

1. Custom sizes

Platforms can be supplied in 10 mm step increments from the minimum size to the maximum size in each platform strength.

2. Interconnecting Cable

The platform can be supplied with any of the following interconnecting cables:

Connector type	Part No.	Lead Length 5 m	Lead Length 10 m
Bulgin	66538-209	✓	✓
9 Way D type	70785-725	✓	✓
Amphenol CONL201	EDA1206	✓	
Amphenol CONL201	EDA1207		✓
Stripped and tinned	EDA1107	✓	
Stripped and tinned	EDA1114		✓
No cable	N/A	N/A	N/A

3. Accomodation for Eccentric Pre-Load

A summation board can be fitted into the junction box to provide output matching. This will be supplied at additional cost.

4. Intrinsically Safe

Intrinsically safe versions (CENELEC approved) for hazardous areas, are available in all sizes.

Intrinsically safe versions are supplied at additional cost.

5. Alternative Finishes

Custom finishes can be supplied at additional cost.

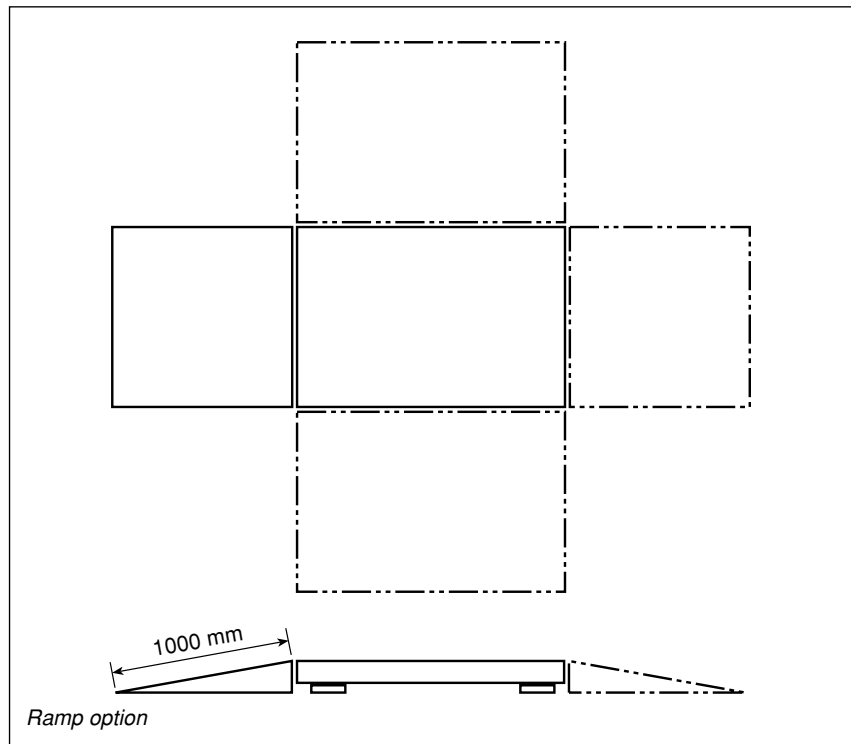
Specification must be supplied for approval and quotation.

6. Ramp

Up to 2 x 1000 mm long ramps can be positioned and fixed at opposite sides of the platform. Ramps supplied at additional cost.

7. Pit Frame Kit

Fully assembled pit mounting kit including foot location are available for all sizes at additional cost.



© Avery Berkel Limited 2004. All rights reserved. This publication is issued to provide outline information only which, unless agreed by Avery Berkel Limited in writing, may not be regarded as a representation relating to the products or services concerned. Avery Berkel Limited reserves the right to alter without notice the specification, design, price or conditions of supply of any product or service.

Your local distributor:

Wessex Scale Co

Lower Mill, Exford Nr Minehead Somerset TA24 7QE

Tel: 0845 472 5345 Fax: 01643 800 299

Email: sales@wessexscales.co.uk

Website: www.wessexscales.co.uk