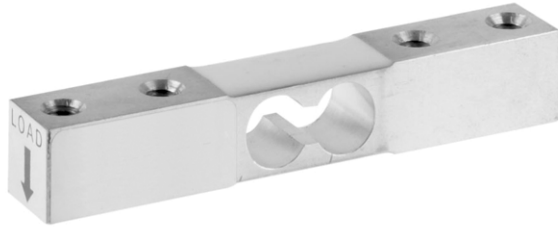


Aluminum Single Point Load Cell



FEATURES

- Capacities 0.5 - 5kg for 350 ohm
- Capacities 5 - 20kg for 1000 ohm
- Aluminum construction
- Single point 200 x 200mm platform
- IP66 protection

DESCRIPTION

Model 1002 is a very small, low capacity, aluminum single point load cell, equally suitable for simple weighing scales or for industrial measurement and medical applications.

The Model 1002 has the advantage of very small size. It is therefore both versatile and easy to use in a wide variety of industrial measurement applications.

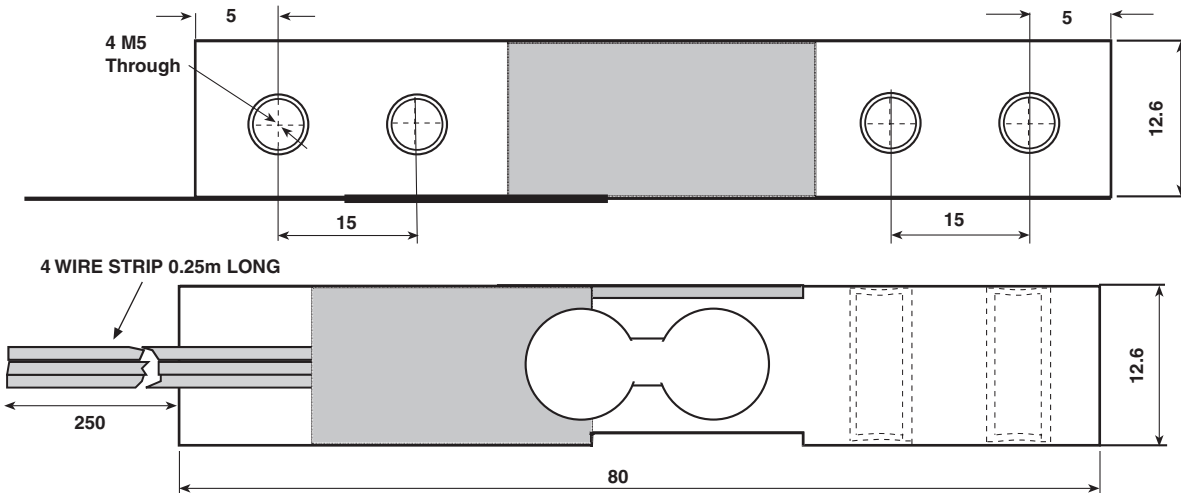
Optional 1000 ohm strain gages are particularly suitable for connection to battery-powered equipment (designated Model 1002-K).

Typical applications include packing machines, filling machines, weaving machines, industrial process control, and low-force medical applications, as well as small-platform weighing.

APPLICATIONS

- Small scales
- Grocery scales

OUTLINE DIMENSIONS in millimeters



Model 1002

Vishay TedeA-Huntleigh

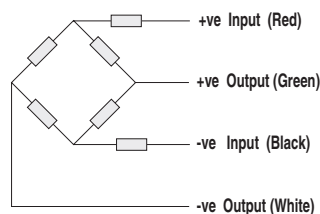
Aluminum Single Point Load Cell



SPECIFICATIONS

PARAMETER	VALUE		UNIT
	1002	1002-K	
Model	1002	1002-K	
Accuracy class	Non-Approved		
Maximum no. of intervals (n)	1000		
Rated capacity-R.C. (E_{max})	0.5, 1, 2, 3, 5	5, 8, 15, 20	kg
Rated output-R.O.	0.5	1.5	mV/V
Rated output tolerance	10		±% mV/V
Zero balance	0.4	0.2	±mV/V
Zero Return, 30 min.	0.050		±% of applied load
Total Error	0.1		±% of rated output
Temperature effect on zero	N/A		±% of rated output/°C
Temperature effect on output	N/A		±% of load/°C
Eccentric loading error	0.16		±% of rated load/cm
Temperature range, compensated	-10 to +40		°C
Temperature range, safe	-20 to +70		°C
Maximum safe central overload	150		% of R.C.
Ultimate central overload	300		% of R.C.
Excitation, recommended	5		Vdc or Vac rms
Excitation, maximum	15		Vdc or Vac rms
Input impedance	350±50	1000±50	Ohms
Output impedance	350±50	1000±50	Ohms
Insulation resistance	>2000		Mega-Ohms
Cable length	0.25		m
Cable type	4 wire, PVC		Standard
Construction	Aluminum		
Environmental protection	IP66		
Platform size (max)	200 x 200		mm
Recommended torque	2		N*m

Wiring Schematic Diagram
(Balanced bridge configuration)



Supplied by,

Wessex Scale Co,

Lower Mill, Exfor Nr Minehead Somerset TA24 7QE

Tel: 0845 472 5345 Fax: 01643 800 299

Email: sales@wessexscales.co.uk

Website: www.wessexscales.co.uk



Disclaimer

All product specifications and data are subject to change without notice.

Vishay Intertechnology, Inc., its affiliates, agents, and employees, and all persons acting on its or their behalf (collectively, "Vishay"), disclaim any and all liability for any errors, inaccuracies or incompleteness contained herein or in any other disclosure relating to any product.

Vishay disclaims any and all liability arising out of the use or application of any product described herein or of any information provided herein to the maximum extent permitted by law. The product specifications do not expand or otherwise modify Vishay's terms and conditions of purchase, including but not limited to the warranty expressed therein, which apply to these products.

No license, express or implied, by estoppel or otherwise, to any intellectual property rights is granted by this document or by any conduct of Vishay.

The products shown herein are not designed for use in medical, life-saving, or life-sustaining applications unless otherwise expressly indicated. Customers using or selling Vishay products not expressly indicated for use in such applications do so entirely at their own risk and agree to fully indemnify Vishay for any damages arising or resulting from such use or sale. Please contact authorized Vishay personnel to obtain written terms and conditions regarding products designed for such applications.

Product names and markings noted herein may be trademarks of their respective owners.